

**HORIZONTAL DEFLECTION TRANSISTOR**

...specifically designed for use in large screen color deflection circuits.

**FEATURES:**

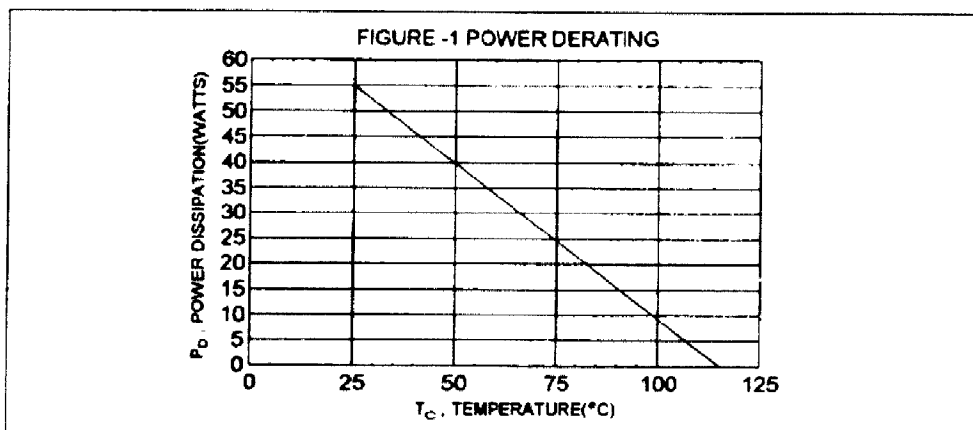
- \* Collector-Emitter Sustaining Voltage -  
 $V_{CEX} = 1300 \text{ V (Min.) - BU207}$   
 $= 1500 \text{ V (Min.) - BU208}$
- \* Glassivated Base-Collector Junction

**MAXIMUM RATINGS**

Characteristic	Symbol	BU207	BU208 BU208A	Unit
Collector-Emitter Voltage	$V_{CEO}$	600	700	V
Collector-Emitter Voltage	$V_{CEX}$	1300	1500	V
Emitter-Base Voltage	$V_{EBO}$	5.0		V
Collector Current - Continuous - Peak	$I_C$	5.0 7.5		A
Base Current - Continuous	$I_B$	2.5		A
Total Power Dissipation @ $T_C=25^\circ\text{C}$ Derate above $25^\circ\text{C}$	$P_D$	55 0.611		W W/ $^\circ\text{C}$
Operating and Storage Junction Temperature Range	$T_J, T_{STG}$	- 65 to +115		$^\circ\text{C}$

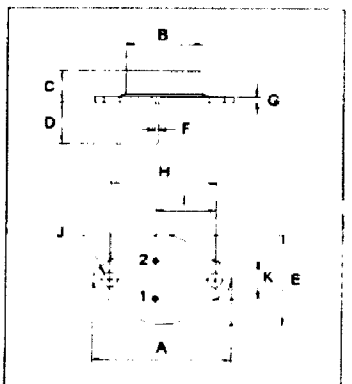
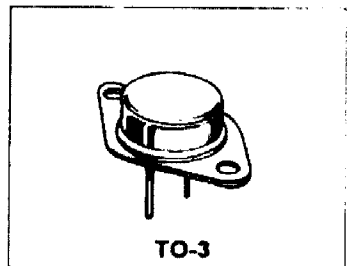
**THERMAL CHARACTERISTICS**

Characteristic	Symbol	Max	Unit
Thermal Resistance Junction to Case	$R_{\theta JC}$	1.64	$^\circ\text{C/W}$



**NPN**  
**BU207**  
**BU208**  
**BU208A**

**5.0 AMPERE**  
**POWER**  
**TRANSISTORS**  
**1300-1500 VOLTS**  
**55 WATTS**



PIN 1, BASE  
2, EMITTER  
COLLECTOR (CASE)

DIM	MILLIMETERS	
	MIN	MAX
A	38.75	39.96
B	19.28	22.23
C	7.96	9.28
D	11.18	12.19
E	25.20	26.67
F	0.92	1.09
G	1.38	1.62
H	29.90	30.40
I	16.84	17.30
J	3.88	4.36
K	10.67	11.18

**BU207, BU208, BU208A NPN**
**ELECTRICAL CHARACTERISTICS (  $T_c = 25^\circ\text{C}$  unless otherwise noted )**

Characteristic	Symbol	Min	Max	Unit
----------------	--------	-----	-----	------

**OFF CHARACTERISTICS**

Collector - Emitter Sustaining Voltage (1) ( $I_c = 100 \text{ mA}$ , $I_B = 0$ )	BU207 BU208, BU208A	$V_{CE(sus)}$	600 700	V
Collector Cutoff Current ( $V_{CE} = 1300 \text{ V}$ , $V_{BE} = 0$ ) ( $V_{CE} = 1500 \text{ V}$ , $V_{BE} = 0$ )	BU207 BU208, BU208A	$I_{CES}$	1.0 1.0	mA
Emitter Cutoff Current ( $V_{EB} = 5.0 \text{ V}$ , $I_c = 0$ )		$I_{EBO}$	10	mA

**ON CHARACTERISTICS (1)**

DC Current Gain ( $I_c = 4.5 \text{ A}$ , $V_{CE} = 5.0 \text{ V}$ )		hFE	2.25	
Collector - Emitter Saturation Voltage ( $I_c = 4.5 \text{ A}$ , $I_B = 2.0 \text{ A}$ )	BU207, BU208 BU208A	$V_{CE(sat)}$	5.0 1.0	V
Base - Emitter Saturation Voltage ( $I_c = 4.5 \text{ A}$ , $I_B = 2.0 \text{ A}$ )		$V_{BE(sat)}$	1.5	V

**DYNAMIC CHARACTERISTICS**

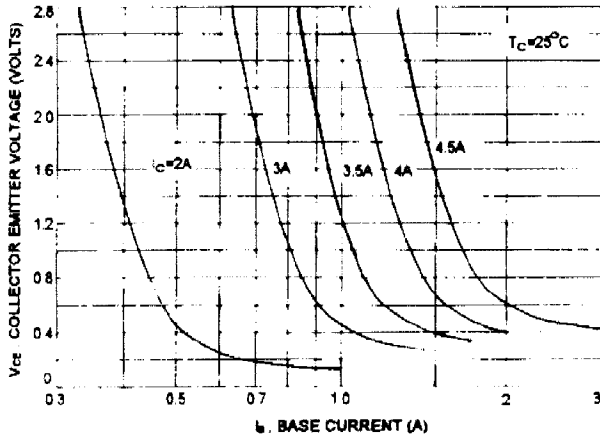
Current Gain - Bandwidth Product ( $I_c = 0.1 \text{ A}$ , $V_{CE} = 5.0 \text{ V}$ , $f = 1.0 \text{ MHz}$ )		$f_T$	4.0(typ)	MHz
Output Capacitance ( $V_{CE} = 10 \text{ V}$ , $I_E = 0$ , $f = 1.0 \text{ MHz}$ )		$C_{ob}$	125(typ)	pF

**SWITCHING CHARACTERISTICS**

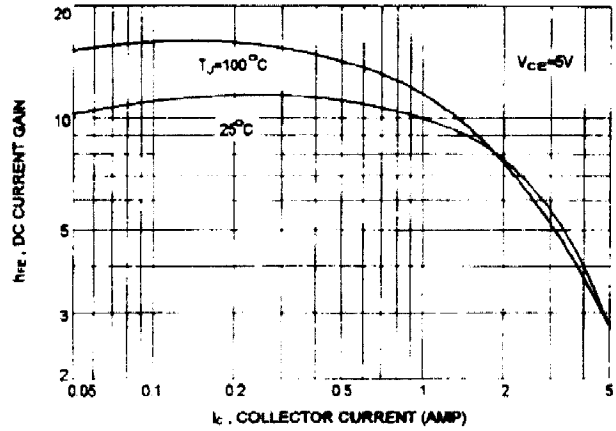
Fall Time ( $I_c = 4.5 \text{ A}$ , $I_{B1} = 1.8 \text{ A}$ , $L_B = 10 \text{ uH}$ )		$t_f$	1.0(typ)	us
---	--	-------	----------	----

(1) Pulse Test: Pulse width  $\leq 300 \text{ us}$ , Duty Cycle  $\leq 2.0\%$

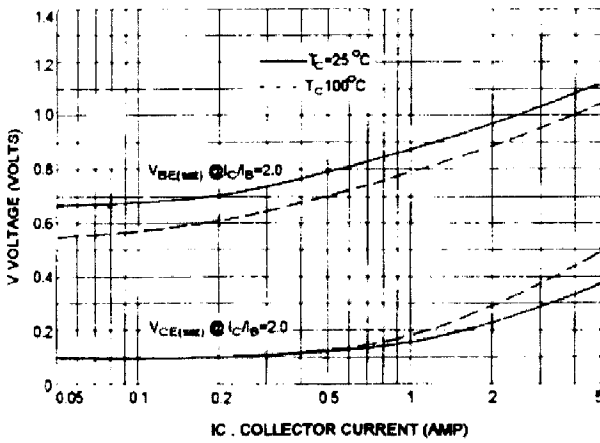
COLLECTOR SATURATION REGION



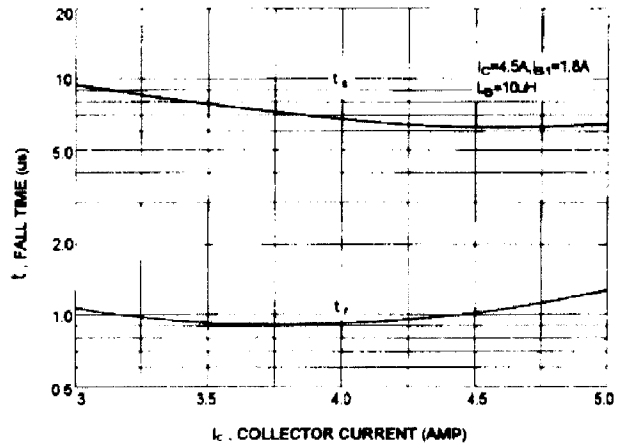
DC CURRENT GAIN



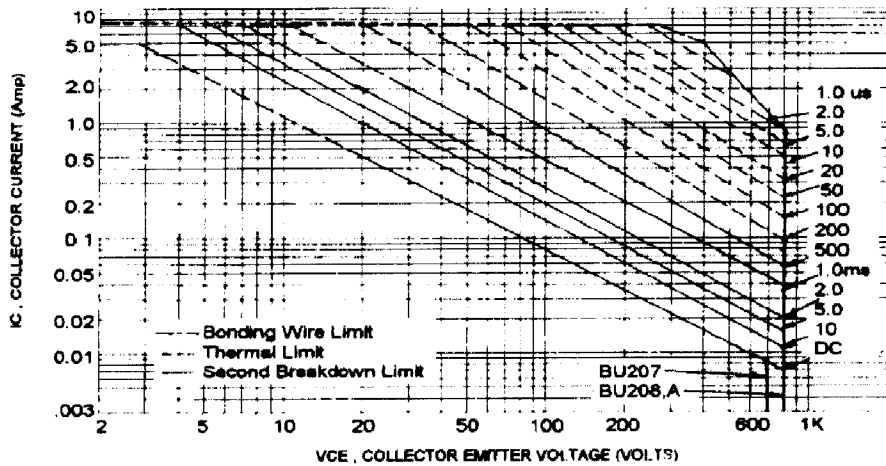
"ON" VOLTAGES



SWITCHING BEHAVIOR VERSUS  $I_{CM}$



FORWARD BIAS SAFE OPERATING AREA



This datasheet has been downloaded from:

[www.DatasheetCatalog.com](http://www.DatasheetCatalog.com)

Datasheets for electronic components.